



**GRAVITY HOUSE**

**LONDON**



## Part of the Gravity Media Group, Gravity House, London features spacious editing and multi-use suites available for wide ranging production and projects across feature film and television.

Arranged over three floors, our home on Newman Street offers 36 suites ideal for offline editing, VFX, production offices and screenings. Every room is beautifully designed, filled with natural light and flexible enough to adapt to the post production needs for a wide range of productions and projects.

With 24/7 access via key card and mobile app, full CCTV coverage of communal areas and overnight security monitoring, our guests can work comfortably and securely at any hour.

Backed by over 30 years of post production experience and supported by an expert engineering team, Gravity House, London balances technical excellence with a sense of ease. It's practical, peaceful, and genuinely welcoming.

We understand that productions don't just visit our spaces, they live them. That's why every detail has been carefully considered, from the layout and decor to the atmosphere we create.

Helping our clients create their next masterpiece is a privilege, and being part of that journey is what drives us. Our aim is simple; to make Gravity House, London feel like a calm, collaborative home where creativity can thrive.



## A community of creators

Gravity House, London has been thoughtfully designed to help our guests work at their best while feeling completely at ease to help create an environment that encourages focus, creativity and connection throughout every stage of their stay.

Our shared spaces are designed to bring people together naturally. A large communal table invites our guests to work, eat or simply pause and connect, creating a welcoming hub for our community of creators. Carefully laid out to encourage interaction without obligation, so you can stage focused when you need to while never feeling disconnected.

Our dedicated running team offers barista level service, adding a personal, human touch to each day and ensuring every need is taken care of.

We're proud that clients choose to return, project after project to make Gravity House their creative base.





## Our Rooms

With **36 rooms** to choose from, Gravity House, London offers flexibility at every level. Our technical team can custom build configurations and umbilical setups, allowing rooms to be adapted quickly to suite multiple workflows, edit stations and project requirements.

All of our suites can be repurposed with ease, whether for editing, VFX, production offices, or reviews. Each room offers the connectivity, space and adaptability needed for modern post production. Connection to the outside world is provided through our dedicated secure internet solution, making data transfers, online reviews and remote editing, swift, stable, and painless.

Gravity Media Production Centres in London and Manchester are directly linked, enabling seamless remote collaboration and large-scale creative projects.

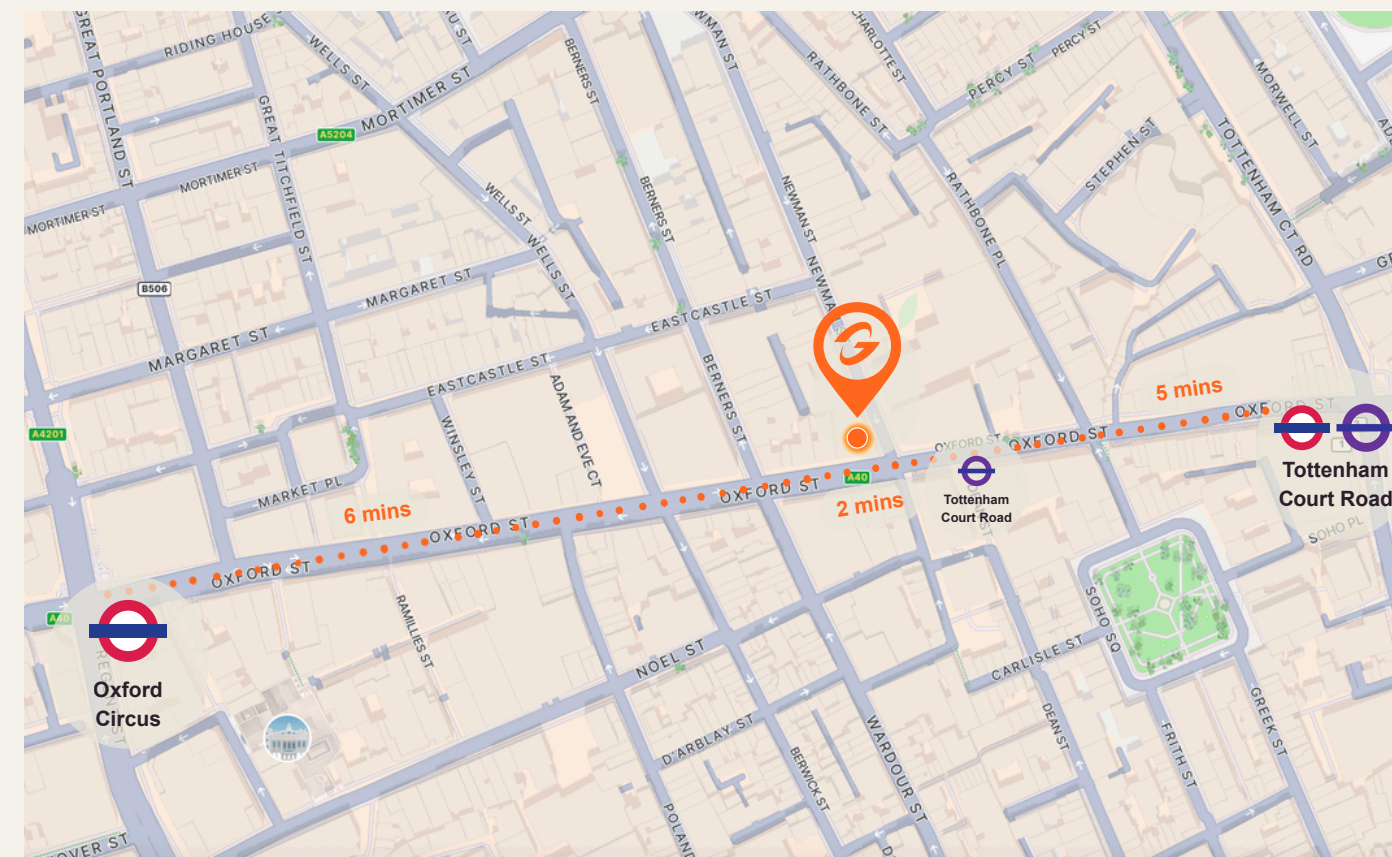
Our offline editing suites include ethernet, fibre, and SDI patching for seamless connectivity between editing suites with every production assigned a separate dedicated secure network and internet connection.

Gravity House also features a **private screening room** which comfortably seats **10** viewers, perfect for watching your production come to life!



## Where to find us

Gravity House is situated just off Tottenham Court Road and directly opposite the Elizabeth Line tube station.





## Our Team

Our home is defined by the people who run it. The care, attention, warmth and relationships we build with our guests during their stay with us is what truly make Gravity House a home from home.

We've brought together a highly skilled, thoughtful team who take pride in what they do. No request is too big, no detail too small. We're here to help.

Together our team combines technical expertise, operational excellence, client-focused care and invaluable industry experience to make every project and client at Gravity House feel comfortable and work efficiently during their stay with us.



**Lou Channing**

**Business Manager Post Production**

With over 25 years' experience within the post production environment Lou leads Gravity House's client relationships and project scheduling, working closely with esteemed feature film and television clients to provide a comfortable and professional environment for editing in Gravity House's new luxurious central London home.



**Becky Martin**

**General Manager**

Oversees building operations and facilities, ensuring an exceptional client experience at every touchpoint. Becky has been managing the hospitality team, creating a welcoming experience for clients and creatives alike for over four years.



**Alexandros Galanos**

**Post Production Engineer**

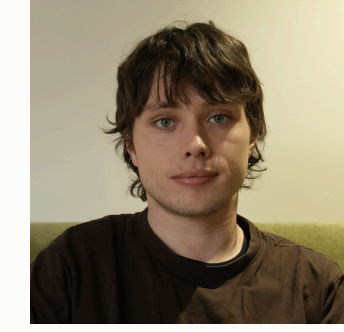
With 20 years of experience in audio and video post-production, Alexandros Galanos provides essential day-to-day engineering services, ensuring seamless technical operations and robust infrastructure.



**Matilda Horton**

**Gravity House Runner**

Elevates the client experience with her creative coffee artistry and thoughtful presentation. Matilda creates a seamless, comfortable environment that allows clients to focus fully on their work.



**Morgan Norris**

**Gravity House Runner**

Brings a personable, warm energy which sets the tone. Morgan showcases a hands-on attitude and adds thoughtful personal touches that strengthens client experience.



## CONTACT

**Lou Channing**

[lou.channing@gravitymedia.com](mailto:lou.channing@gravitymedia.com)

**Becky Martin**

[rebecca.martin@gravitymedia.com](mailto:rebecca.martin@gravitymedia.com)